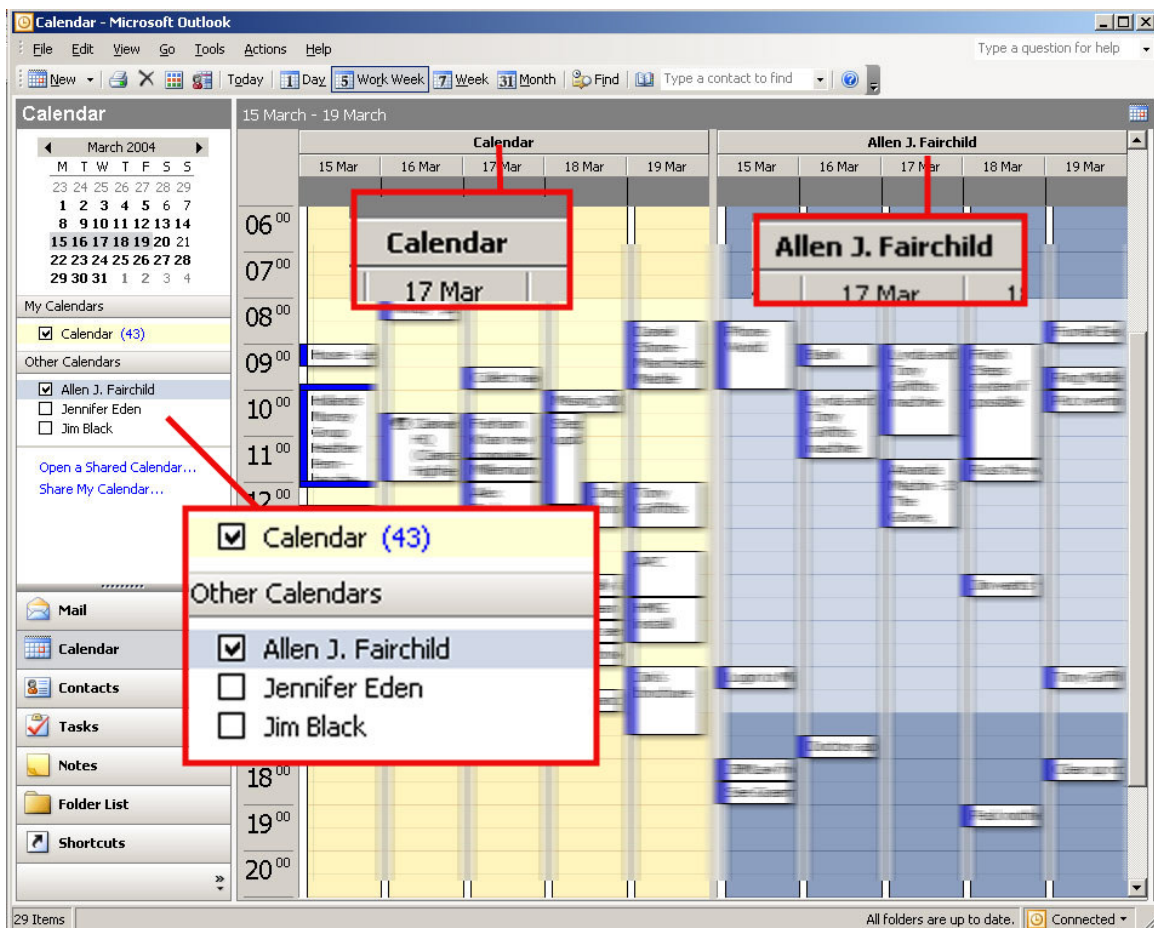


Microsoft Windows Server™ 2003

Microsoft Windows Server 2003 and its benefits.

Microsoft Outlook and Microsoft Exchange 2003:

This product allows you to have your calendar, tasks, contacts and inbox shared with other users, and enables you to view other colleagues' resources. This is much more reliable than using the calendar sharing facility which Microsoft Office 2000 has to offer. Microsoft Small Business Server comes with five user licences for Outlook 2003. Please see the screen shots below and on the following pages.



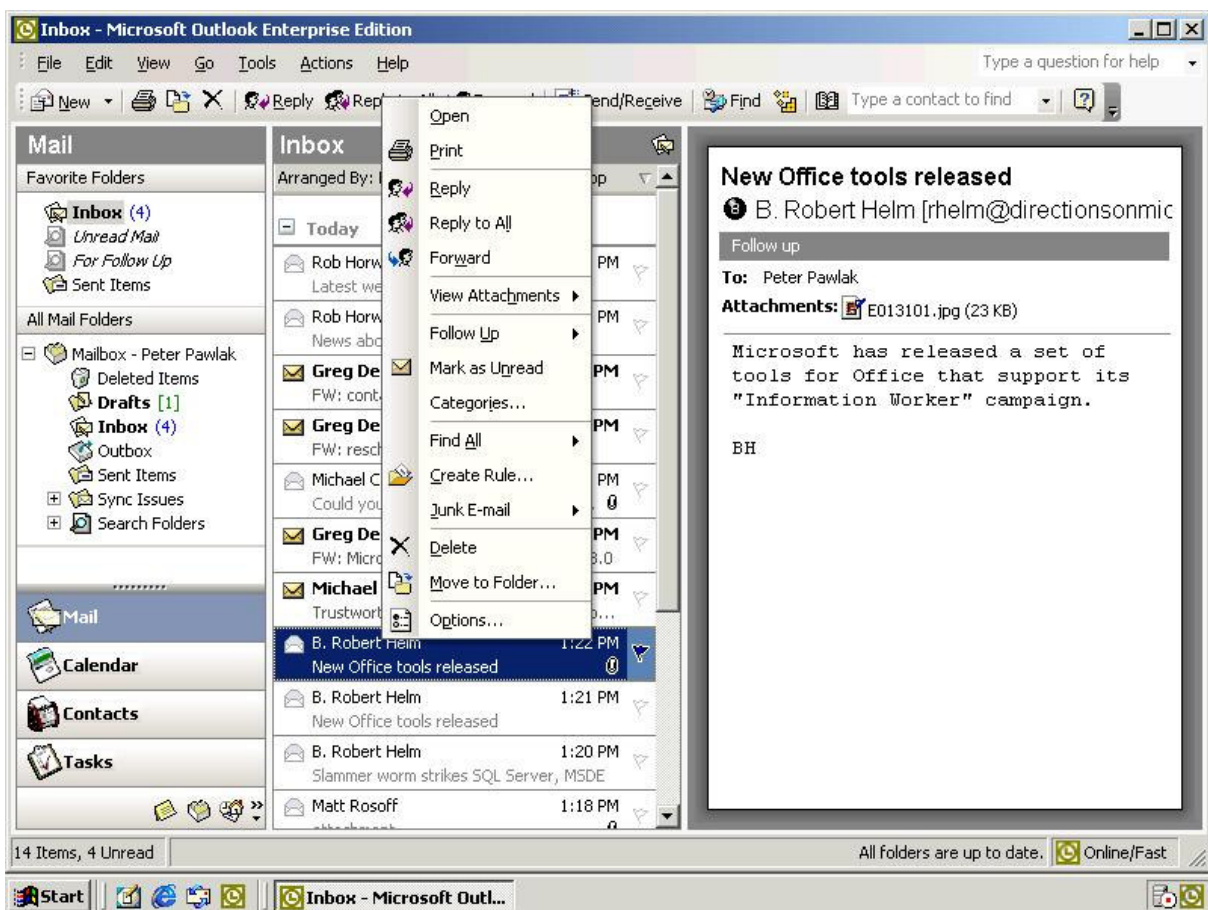
Viewing two calendars at once – add and amend, drag and drop your colleague's appointments from your terminal!

You can also view and amend other member's contacts, tasks, mail and shared Outlook folders!

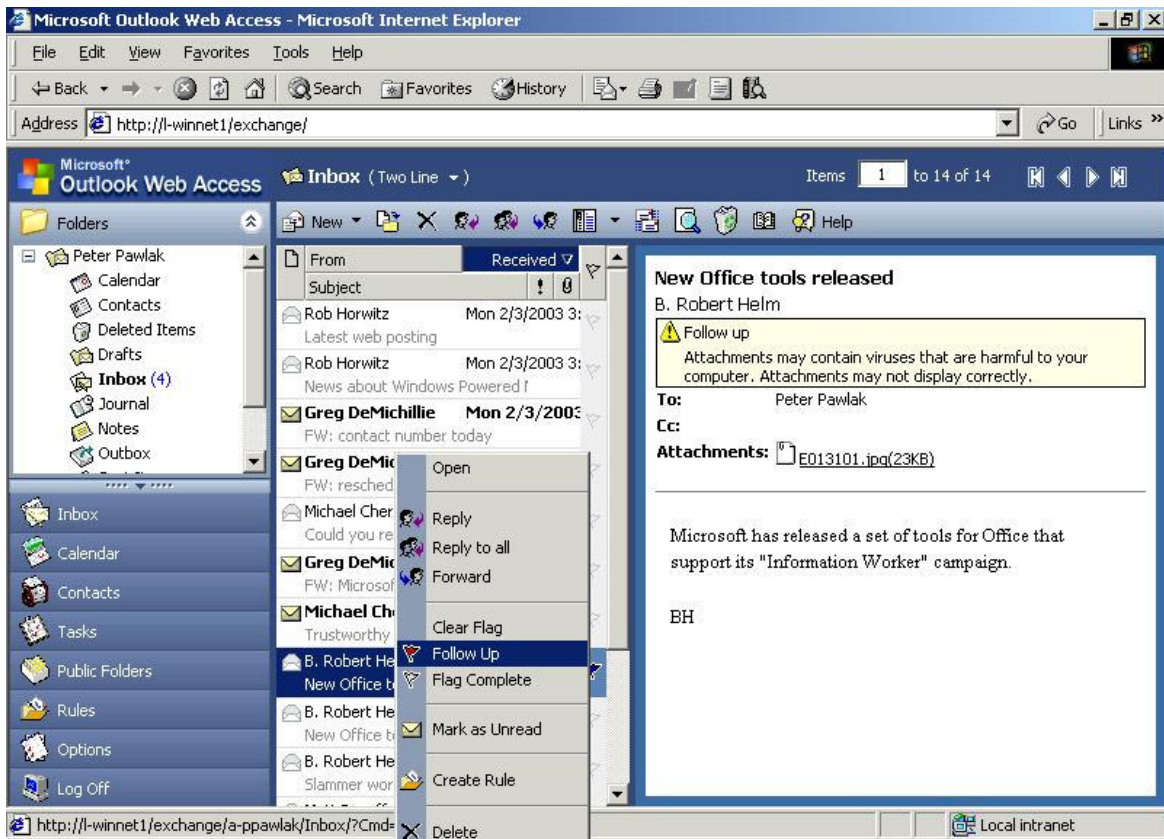
Web Mail Client:

Web mail is nothing new, but with Windows Server 2003 you can also access your calendar, tasks, contacts and most other Outlook facilities using an internet connection and web browser. For example if your secretary or colleagues have amended your appointments or have sent you information, you can access it from almost anywhere! Windows Server 2003 web mail looks and feels like you are using your Outlook in the office. This is a real innovation from Microsoft. Please see the screen shots on the next page.

Example of Outlook 2003 and Web Mail Client:



Outlook 2003 Screen Shot



Web mail Client – it feels like you are sat in the office!

Synchronisation with mobile devices:

If your server has a dedicated phone line installed, your mobile devices can connect to your server and synchronise with your inbox, calendar and tasks anywhere! *(a compatible handset is required).



New junk mail filter!

Are you tired of receiving hundreds of spam emails? Microsoft Outlook 2003 with Exchange will automatically separate emails, based on their content and addresses to help ensure that you don't have to wade through junk emails to find your important messages. This also increases security as high risk emails are removed without the need for inspection.

When set in "high" blocking mode, the Outlook filter is around 95% effective in sending spam to your junk-mail folder instead of your inbox.

More importantly, the filter is 100% effective in blocking pornographic spam containing pictures. Your results may vary, depending on how much mail you receive and how much of it is junk. But that's as good a block rate as any spam filter on the market today that doesn't require all senders to register themselves onto a "white list" of authenticated email addresses.

Will I have to buy a new server to run Windows Server 2003?

No, Windows Server 2003 runs well even on older hardware. The minimum system requirements are shown below.

Windows Server 2003 System Requirements (SBS).	
Requirement	Standard Edition
Minimum CPU Speed	133 MHz
Recommended CPU Speed	550 MHz
Minimum RAM	128 MB
Recommended Minimum RAM	256 MB
Maximum RAM	4 GB
Multiprocessor Support **	Up to 4
Disk Space for Setup	1.5 GB

Monitoring your system's health:

With Microsoft Windows Server 2003, we, as your computer maintenance company, will receive a **health status email** from your server every day warning us of any problems, such as problems with:

- Backup
- Email
- Hard Disk Space
- Data Corruption
- Security problems
- Critical Errors
- Performance Issues/Statistics

All the above allow us to foresee problems and **respond to them quickly**, when they occur, saving you downtime and money!

Backups & Shadow Copy:

One of the new facilities in SBS 2003 is Shadow Copy. Shadow Copy keeps snapshots of your files periodically through the day. For example, if you had been working on a word or excel document, and wanted to go back to

a previous version you had been working on, you can revert to a version that the server has "snapshots" of instantly! See the screenshot below for an example of how a file is restored by Shadow Copy:



Full System Backups:

With a tape backup drive, Windows 2003 Server can ensure your system is backed up routinely giving you peace of mind when saving your data.

Roaming Profiles:

A Roaming Profile is used to preserve a user's configuration (desktop, background, etc). When a user logs on to any machine they will have an identical environment to their own machine.

This means that a user who is configured to use a roaming profile can use a computer (A), make changes to the desktop, log off and log onto another computer (B), and see the exact desktop he/she had on computer A.

- **Simplified computer replacement and backup**

Windows 2003 Server stores each users profile on a single computer. Computers can be replaced easily because all of the user's profile information is maintained separately on the network, independent of an individual computer. When the user logs on to the new computer for the first time, the server copy of the user's profile is copied to the new computer.

Email control and monitoring:

You can view your employees' email and web usage, and even restrict their access to areas of the web you would not wish them to use.

Reliability and Security:

Windows Server 2003 is the fastest, most reliable; most secure Windows Server operating system ever offered by Microsoft. With its enhanced security and monitoring features we can help maintain a secure and reliable backbone infrastructure.

Summary of Test Results

Benchmark	Performance Gain over Windows NT 4.0	Performance Gain over Windows 2000
NetBench: File Server Performance	<ul style="list-style-type: none"> 64% faster on single-processor systems 148% faster on 8-processor systems 	<ul style="list-style-type: none"> 35% faster on single-processor systems 84% faster on 8-processor systems
WebBench: Static Web Server Performance	<ul style="list-style-type: none"> 162% faster on single-processor systems 487% faster on 8-processor systems 	<ul style="list-style-type: none"> 80% faster on single-processor systems 355% faster on 8-processor systems
WebBench: Dynamic (ISAPI-based) Web Server Performance	<ul style="list-style-type: none"> 109% faster on single-processor systems 368% faster on 8-processor systems 	<ul style="list-style-type: none"> 64% faster on single-processor systems 333% faster on 8-processor systems
DirectoryMark: LDAP (Messaging) Performance	Not applicable ¹	<ul style="list-style-type: none"> 102% faster on single-processor systems 439% faster on 8-processor systems